

ENCODE DCC Antibody Validation Document

Date of Submission

Name:

Email:

Lab

Antibody Name:

Target:

Company/
Source:

Catalog Number, database ID, laboratory

Lot Number

Antibody
Description:

Target
Description:

Species Target

Species Host

Validation Method #1

Validation Method #2

Purification
Method

Polyclonal/
Monoclonal

Vendor URL:

Reference (PI/
Publication
Information)

Please complete the following for antibodies to histone modifications:
if your specifications are not listed in the drop-down box,
please write-in the appropriate information

Histone Name

AA modified

AA Position

Modification

A band of ~130kD was immunoprecipitated from CH12 and MEL nuclear extracts using ab992. This antibody has been validated for human cell lines by Immunoprecipitation and siRNA knockdown.

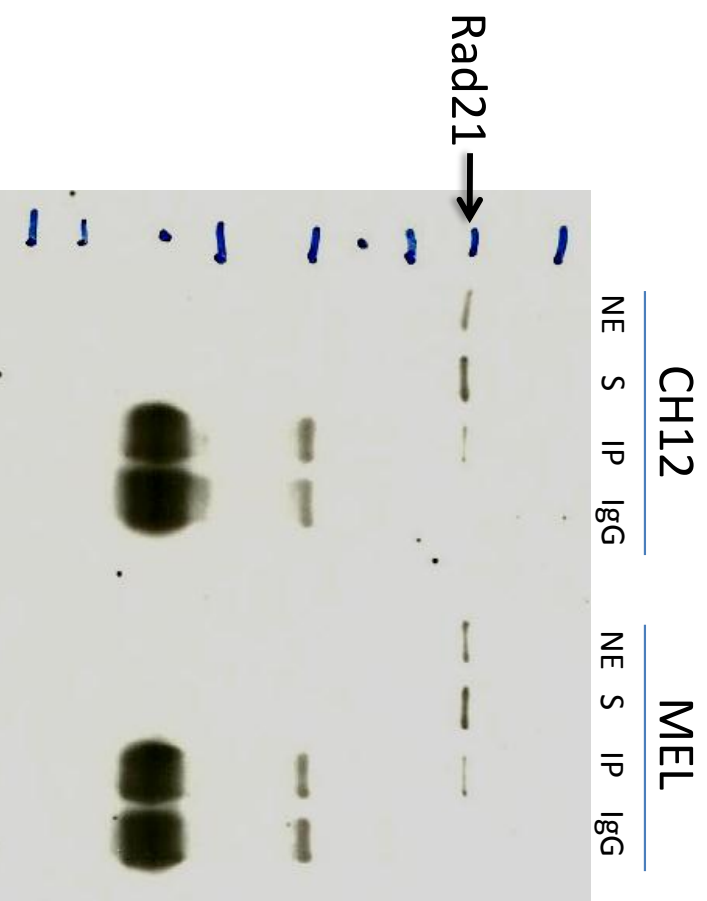
Validation #1
Analysis

Insert Validation Image (click here)

Antibody: Rad21 Source: Abcam ab992

Epitope: Rad21 Antibody is rabbit polyclonal, epitope represented a portion of human Rad21 encoded within exon 14

Validation 1: Immunoprecipitation (IP) in both CH12 and MEL cell lines



Arrow indicates immunoprecipitated band of expected size of Rad21 in both CH12 and MEL cell lines (~130 kDa).

NE: nuclear extract

S: supernatant after IP

IP: IP with tested antibody

IgG: IP with control IgG

This antibody has been validated by siRNA knockdown for human cell. See documents submitted for human cell lines for details.

Validation #2
Analysis

Insert Validation Image (Click here)